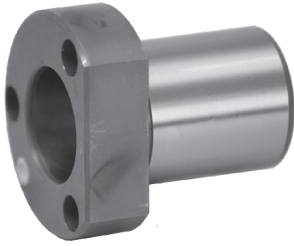
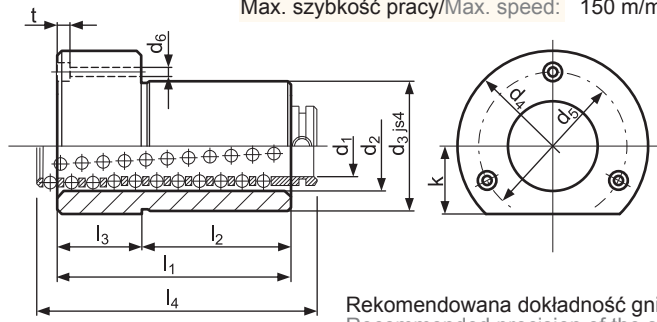


Tuleja do prowadzeń kulkowych - TKK Bush for ball bearing guides - TKK

Material/Material: 1.7131
Twardość/Hardness: 62±2 HRC



Max. szybkość pracy/Max. speed: 150 m/min



Rekomendowana dokładność gniazda - d₃ (H5)
Recommended precision of the socket - d₃ (H5)

t	k	d ₂	d ₃	d ₄	d ₅	d ₆	l ₄	l ₃	l ₂	l ₁	d ₁	Nr katalogowy Item no.	d	Nr katalogowy Item no.
4,6	18	25-26	32	50	40	4,5	45	15	23	38	20	TKK-20038	19	TKK-19038
							56	15	30	45		TKK-20045		TKK-19045
							71	15	37	52		TKK-20052		TKK-19052
5,7	23	30-31	40	63	50	5,5	45	15	23	38	25	TKK-25038	24	TKK-24038
							71	25	30	55		TKK-25055		TKK-24055
							71	25	37	62		TKK-25062		TKK-24062
5,7	28	38-40	48	72	58	5,5	56	15	30	45	32	TKK-32045	30	TKK-30045
							71	25	37	62		TKK-32062		TKK-30062
							80	25	47	72		TKK-32072		TKK-30072
6,8	33	46-48	58	85	70	6,6	63	25	30	55	40	TKK-40055	38	TKK-38055
							80	30	37	67		TKK-40067		TKK-38067
							95	30	47	77		TKK-40077		TKK-38077
9	38	56-58	70	104	86	9	80	25	37	62	50	TKK-50062	48	TKK-48062
							95	42	47	89		TKK-50089		TKK-48089
							120	42	60	102		TKK-50102		TKK-48102
9	46	68-71	85	120	100	9	95	42	47	89	63	TKK-63089	60	TKK-60089
							120	42	60	102		TKK-63102		TKK-60102
11	56	92	105	148	125	11	140	50	75	125	80	TKK-80125	-	-