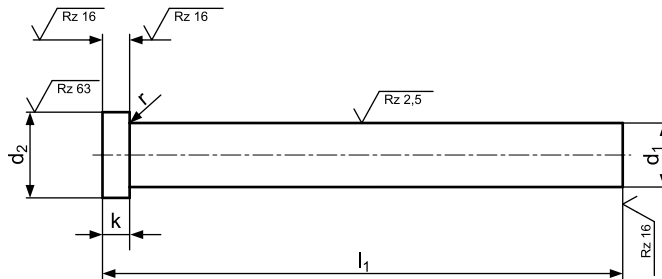
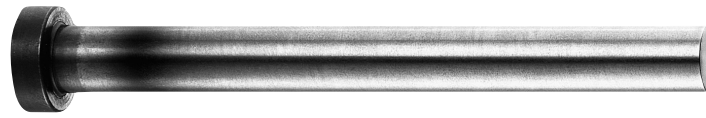


Wypychacz z łbem cylindrycznym, hartowany - 6121...

Ejector pin/core pin, hardened - 6121...

wg ISO 6751, hartowany (DIN 1530, typ AH)

to ISO 6751, hardened (DIN 1530, type AH)



Opis/Description: Wypychacz z łbem cylindrycznym kutym na gorąco, trzpień hartowany, odpuszczany i szlifowany, g6. Szczególnie polecany przy odlewaniu ciśnieniowym i formach wtryskowych.

Materiał/Material: WS = 1.2210, 1.2067

Twardość/Hardness: Trzpień/Shaft: 60±2 HRC
Łeb/Head: 45±5 HRC

Cylindrical head hot forged with hardened shaft, tempered and fine ground finished to g6. Particular suitable for pressure die cast and injection moulded tools

d1 g6	d2 ⁰ / _{-0,2}	k ⁰ / _{-0,05}	r ^{+0,2} / ₀	l1 ⁺² / ₀															
				40	50	63	80	100	125	160	200	250	315	400	500	630	800		
0,8	2,5	1,2	0,2	●	●	●	●	●	●	●									
0,9				●	●	●	●	●	●	●									
1,0				●	●	●	●	●	●	●	●								
1,1				●	●	●	●	●	●	●	●	●							
1,2				●	●	●	●	●	●	●	●	●	●						
1,3	3	1,5		●	●	●	●	●	●	●	●	●							
1,4				●	●	●	●	●	●	●	●	●							
1,5				●	●	●	●	●	●	●	●	●	●	●					
1,6				●	●	●	●	●	●	●	●	●	●	●					
1,7				●	●	●	●	●	●	●	●	●	●						
1,8				●	●	●	●	●	●	●	●	●	●						
1,9				●	●	●	●	●	●	●	●	●	●						
2,0	4	2		●	●	●	●	●	●	●	●	●	●	●	●	●			
2,1							●	●	●	●	●	●	●	●	●				
2,2							●	●	●	●	●	●	●	●	●				
2,3							●	●	●	●	●	●	●	●	●				
2,4						●	●	●	●	●	●	●	●	●					
2,5			5	2	●	●	●	●	●	●	●	●	●	●	●	●	●		
2,6								●	●	●	●	●	●	●	●	●			
2,7						●	●	●	●	●	●	●	●	●					
2,8						●	●	●	●	●	●	●	●	●					
2,9						●	●	●	●	●	●	●	●	●					
3,0	6	3	●	●	●	●	●	●	●	●	●	●	●	●	●				
3,1						●	●	●	●	●	●	●	●	●					
3,2						●	●	●	●	●	●	●	●	●					
3,3						●	●	●	●	●	●	●	●	●					
3,4						●	●	●	●	●	●	●	●	●					
3,5			7	3	●	●	●	●	●	●	●	●	●	●	●	●	●		
3,6								●	●	●	●	●	●	●	●	●			
3,7						●	●	●	●	●	●	●	●	●					
3,8						●	●	●	●	●	●	●	●	●					
3,9						●	●	●	●	●	●	●	●	●					
4,0	8	3	●	●	●	●	●	●	●	●	●	●	●	●	●				
4,1						●	●	●	●	●	●	●	●	●					
4,2						●	●	●	●	●	●	●	●	●					
4,3						●	●	●	●	●	●	●	●	●					

● - Dostępne z magazynu lub w krótkim terminie. Pozostałe wymiary na zamówienie
Available from stock or in short time. Other dimensions on request

Wypychacz z łbem cylindrycznym, hartowany - 6121...

Ejector pin/core pin, hardened - 6121...

wg ISO 6751, hartowany (zgodny z DIN 1530, typ AH)

to ISO 6751, hardened (DIN 1530 standard, type AH)

d ₁ g6	d ₂ ⁰ / _{-0,2}	k ⁰ / _{-0,05}	r ^{+0,2} / ₀	l ₁ ⁺² / ₀																	
				40	50	63	80	100	125	160	200	250	315	400	500	630	800				
4,4	8	3	0,3					●	●	●	●										
4,5						●	●	●	●	●	●	●	●	●	●						
4,6								●	●	●	●	●	●	●	●						
4,7										●	●	●	●	●	●						
4,8											●	●	●	●	●						
4,9											●	●	●	●	●						
5,0	10					●	●	●	●	●	●	●	●	●	●	●	●	●	●		
5,1										●	●	●	●	●	●						
5,2									●	●	●	●	●	●	●	●	●				
5,3											●	●	●	●	●						
5,4											●	●	●	●	●						
5,5											●	●	●	●	●	●	●	●	●	●	●
5,6									●	●	●	●	●	●	●	●					
5,7									●	●	●	●	●	●							
5,8									●	●	●	●	●								
5,9									●	●	●	●	●								
6,0	12	5	0,5	●	●	●	●	●	●	●	●	●	●	●	●	●	●	●			
6,1																					
6,2									●	●	●	●	●	●	●	●	●	●	●		
6,3											●	●	●	●							
6,4											●	●	●	●							
6,5											●	●	●	●	●	●	●	●			
6,6											●	●	●	●	●						
6,7											●	●	●	●	●	●	●				
6,8											●	●	●	●	●						
6,9											●	●	●	●	●						
7,0	14									●	●	●	●	●	●	●	●	●	●	●	
7,2											●	●	●	●							
7,5											●	●	●	●	●	●	●	●			
8,0									●	●	●	●	●	●	●	●	●	●	●	●	●
8,1											●	●	●	●	●	●	●	●	●	●	●
8,2											●	●	●	●	●	●	●	●	●	●	●
8,5											●	●	●	●	●	●	●	●	●	●	●
9,0											●	●	●	●	●	●	●	●	●	●	●
9,5											●	●	●	●	●	●	●	●	●	●	●
10,0				16							●	●	●	●	●	●	●	●	●	●	●
10,1								●	●	●	●	●	●	●	●	●	●	●			
10,2							●	●	●	●	●	●	●	●	●	●	●	●			
10,5									●	●	●	●	●	●	●	●	●	●			
10,7									●	●	●										
11,0									●	●	●	●	●	●	●	●	●	●			
12,0	18	7	0,8				●	●	●	●	●	●	●	●	●	●	●	●			
12,2																					
12,5																					
13,0											●	●	●	●	●	●	●	●	●	●	
14,0				22							●	●	●	●	●	●	●	●	●	●	●
14,5											●	●	●	●	●	●	●	●	●	●	●
15,0											●	●	●	●	●	●	●	●	●	●	
16,0									●	●	●	●	●	●	●	●	●	●	●	●	
16,5											●	●	●	●	●	●	●	●	●	●	
18,0	24												●	●	●	●	●	●	●	●	
20,0	26			8	1,0						●	●	●	●	●	●	●	●	●	●	
20,5													●	●	●	●	●	●	●	●	●
25,0		32	10			1,0							●	●	●	●	●	●	●		

● - Dostępne z magazynu lub w krótkim terminie. Pozostałe wymiary na zamówienie
Available from stock or in short time. Other dimensions on request

Sposób zamawiania: Wypychacz - 6121.
d₁ = 4,5 mm - 045.
l₁ = 125 mm - 0125
Nr katalogowy - 6121.045.0125

How to order: Ejector - 6121.
d₁ = 4,5 mm - 045.
l₁ = 125 mm - 0125
Item no. - 6121.045.0125