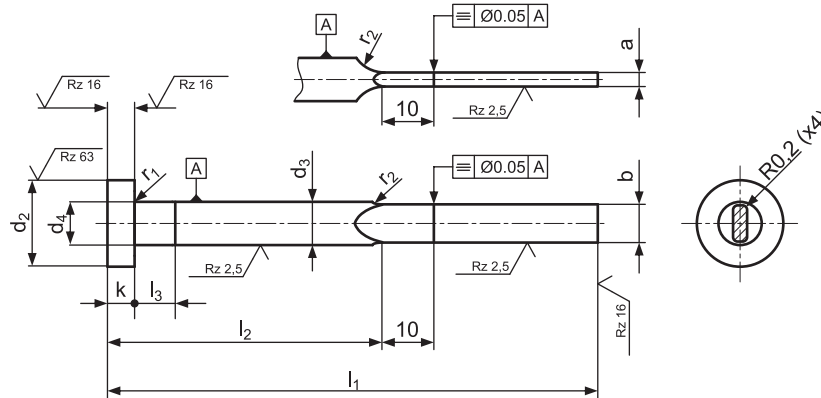


Wypychacz płaski z łbem cylindrycznym z promieniem na krawędziach - 6341...

Blade ejector pin with cylindrical head with radius on corners - 6341...

wg DIN ISO 8693 (DIN 1530, typ FAH hartowany)

to DIN ISO 8693 (DIN 1530, type FAH, hartowany)



Opis/Description: Wypychacz płaski z łbem cylindrycznym kutym na gorąco, trzpień hartowany, odpuszczany i szlifowany.

Materiał/Material: WS = 1.2067

Head hot forged hardened shaft, tempered and fine ground finished.
Particularly suitable for pressure die cast tools.

Twardość/Hardness: Trzpień/Shaft: 60±2 HRC
Łeb/Head: 45±5 HRC

a ⁰ _{-0,015}	b ⁰ _{-0,015}	d ₃ h11	d ₂ ⁰ _{-0,2}	k ⁰ _{-0,05}	r ₁ ^{+0,2} ₀	r ₂ min	l ₁ ⁺² ₀																
							63	80	100	125	160	200	250	315									
							l ₂ ⁻¹ ₋₂																
							30	40	50	63	80	100	125	160									
0,5	2,8	3	6	3	0,3	10		●	●	●	●	●											
0,6							●	●	●	●													
0,8							●	●	●	●	●												
1,0											●												
0,5	3,8	4,2	8				5	0,5	10		●	●	●	●	●								
0,6										●	●	●	●	●									
0,8										●	●	●	●	●	●	●							
1,0										●	●	●	●	●	●	●	●						
1,2	4,5	5	10							7	0,8	10		●	●	●	●	●	●	●			
1,0													●	●	●	●	●	●	●	●	●		
1,2													●	●	●	●	●	●	●	●	●	●	
1,5													●	●	●	●	●	●	●	●	●	●	
1,0	5,5	6	12	9	1,0	10								●	●	●	●	●	●	●	●		
1,2													●	●	●	●	●	●	●	●	●	●	
1,5													●	●	●	●	●	●	●	●	●	●	●
2,0													●	●	●	●	●	●	●	●	●	●	●
1,2	7,5	8	14				11	1,2	10						●	●	●	●	●	●	●		
1,5																							
2,0																							
1,5																							
1,5	9,5	10	16							13	1,5	10					●	●	●	●	●		
2,0																							
2,0																							
2,5																							
2,0	11,5	12	18	15	2,0	10												●	●	●	●		
2,5																							

● - Dostępne z magazynu lub w krótkim terminie. Pozostałe wymiary na zamówienie
Available from stock or in short time. Other dimensions on request

Sposób zamawiania: Wypychacz - 6341.
a = 1,2 mm - 12.
b = 7,5 mm - 075.
l₁ = 200 mm - 200
Nr katalogowy - 6341.12.075.200

How to order: Ejector - 6341.
a = 1,2 mm - 12.
b = 7,5 mm - 075.
l₁ = 200 mm - 200
Item no. - 6341.12.075.200